



Blacksmith Institute's Global Inventory Project

Summary

Blacksmith Institute is an international not-for-profit organization focused on reducing the negative health impacts from toxic pollution. The organization is currently developing a global inventory of toxic hotspots that pose a risk to human health. Since 2009, Blacksmith and its partners have conducted more than 1,500 assessments of polluted sites in 47 countries. The inventory project is supported by the European Commission and the World Bank.

Country Selection

The inventory is being conducted in low- to middle-income countries as defined by the World Bank. Some countries are excluded because they have little or no industrial base, have ongoing conflict, or have an oppressive or non-cooperative government. In 2012, Blacksmith will expand the project to create national inventories in fifteen new countries.

Initial Site Assessment

Blacksmith uses a simplified risk assessment protocol known as the Initial Site Assessment (ISA) to evaluate sites. The ISA is a rapid assessment tool to evaluate the relative health risks posed by a group of sites. The Inventory allows us to identify those sites that pose the greatest risk to human health, and prioritize those for more detailed assessment and intervention.

Government Collaboration

Blacksmith Institute works closely with relevant government agencies at all stages of the process. Technical staff from relevant agencies accompany Blacksmith staff during site assessments and jointly add information into the online database of assessments. A part-time Country Coordinator is contracted in every country to facilitate this relationship. Where appropriate, Blacksmith may cover government costs associated with carrying out site assessments, including sampling and transportation expenses.

Staffing

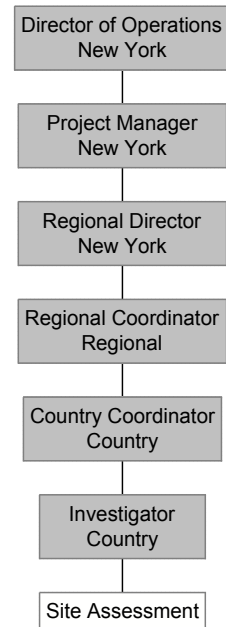
Key staffing positions are outlined below.

Project Manager – New York-based. Responsible for overall coordination of project. Supports Regional Directors. Reports to Blacksmith Director of Operations.

Regional Director – New York-based. Responsible for regional coordination of project. Supports Regional Coordinators and/ or National Coordinators. Reports to Blacksmith Director of Operations.

Regional Coordinator – Regionally-based. Responsible for day-to-day regional coordination, including: contracting Country Coordinators, cultivating and managing government relationships, and ensuring consistent implementation across the region. Reports to Regional Director.

GIP Management



Country Coordinator – Country-based. Responsible for day-to-day country coordination, including: contracting and managing Investigators, cultivating and managing government relationships, identifying contaminated sites, and ensuring consistent implementation across the country. Reports to Regional Coordinator and/or Regional Director.

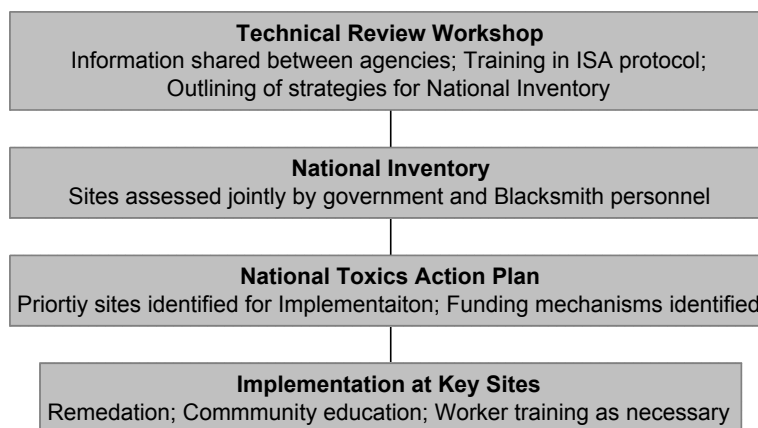
Investigator – Country-based. Responsible for identifying contaminated sites and carrying out ISAs. Reports to Country Coordinator.

Technical Review Workshop

Blacksmith and Government personnel attend a national Technical Review Workshop to learn the ISA protocol. The workshop is typically two days and includes a site visit during which the ISA protocol is demonstrated. As part of the workshop, government and Blacksmith staff share experiences with existing and previous efforts to inventory polluted sites and deal with toxic hotspots.

Online Database

All completed ISAs are entered into an online password-protected database. Each database is country specific and exists in the appropriate local language. Country governments are given full access to the database including the ability to create and delete users, and download any and all information. The information in the database is not public. Individual site assessments may be shared with multi-lateral development banks or other funders if a cleanup project is implemented.



National Toxics Action Plan (NTAP)

Once the national inventory of sites is robust and captures a considerable percentage of problem sites, Blacksmith may assist the relevant government agencies in organizing a national workshop to prioritize sites for intervention and identify funding for intervention. This workshop typically includes representatives of the Ministries of Health and Environment, academia, Blacksmith and international funding agencies. Past workshops have included representatives from the World Bank, Inter-American Development Bank, USAID, and the Asian Development Bank, among others. During the workshop, the group creates a list of priority sites and identifies funding mechanisms for implementing cleanup projects.

Implementation

Where funding is available for project implementation, Blacksmith can offer valuable assistance in the areas of project design and management and technical assistance.