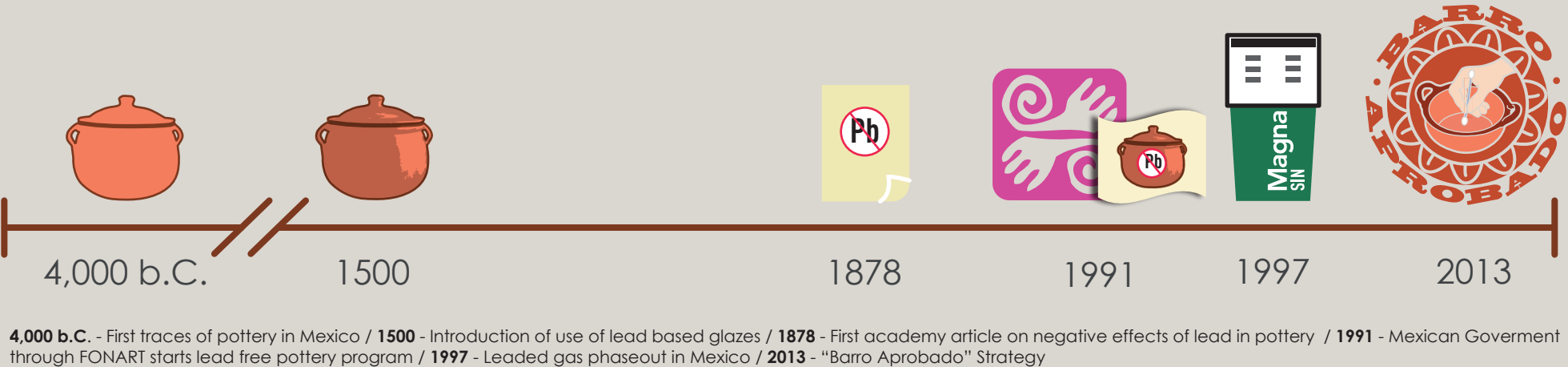


MORELOS

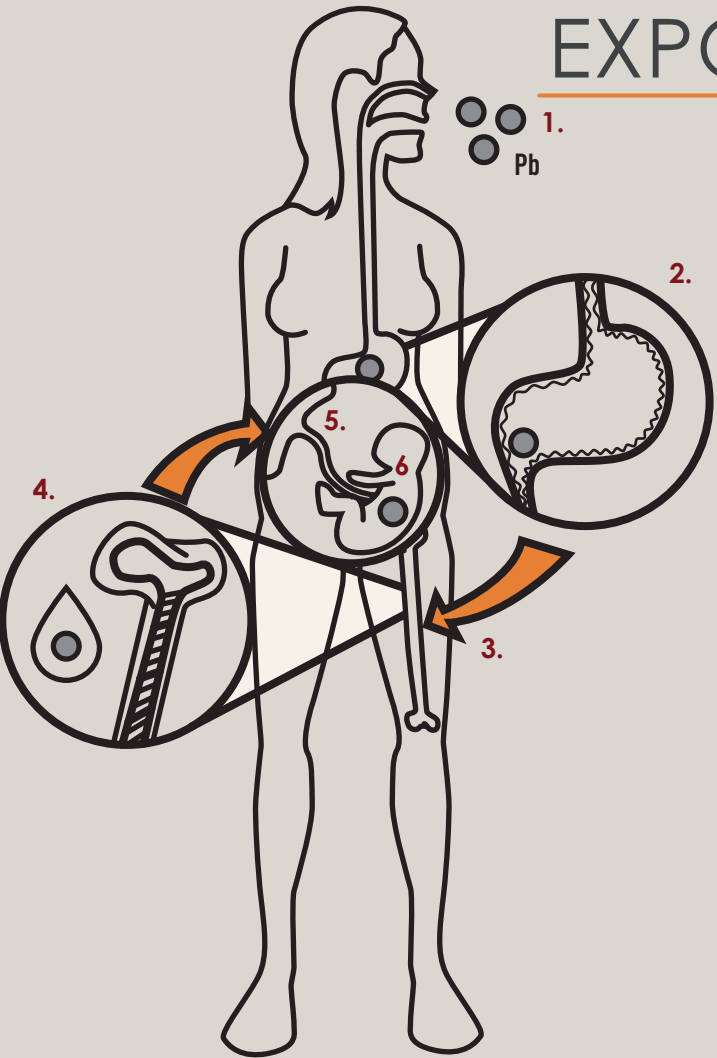


STRATEGY

CHRONOLOGY

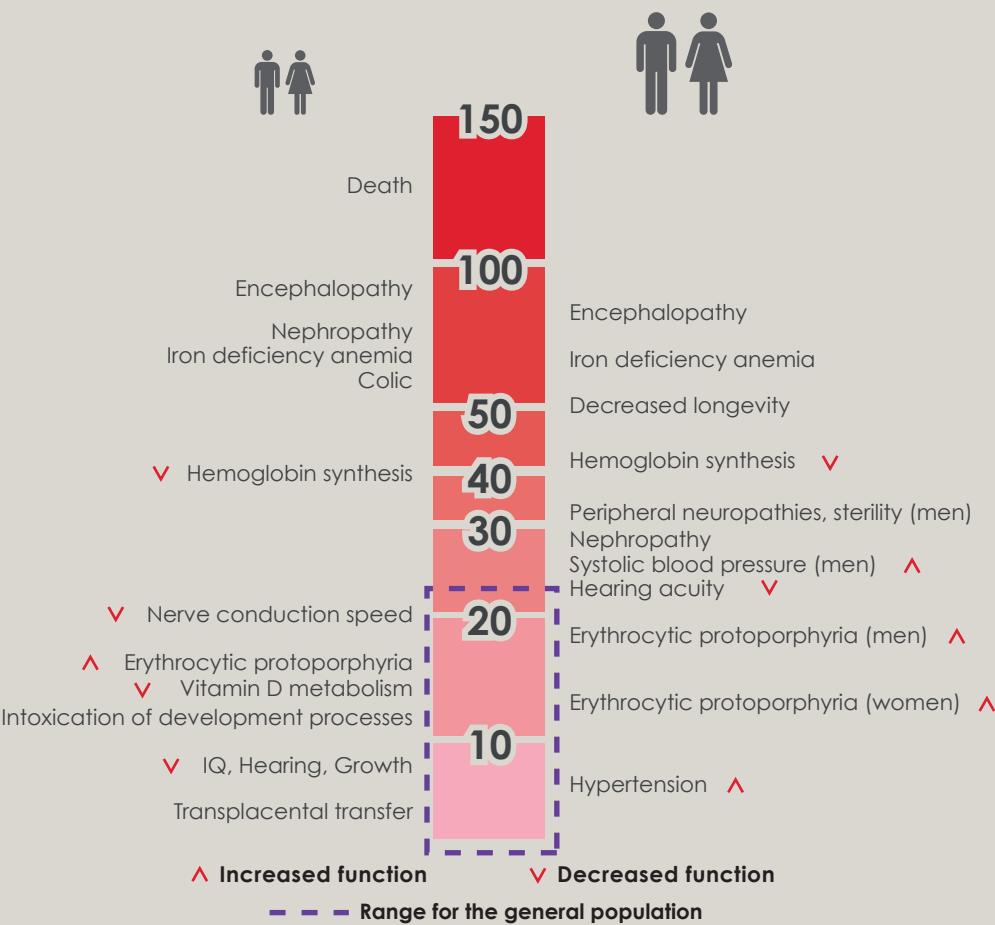


LEAD EXPOSURE

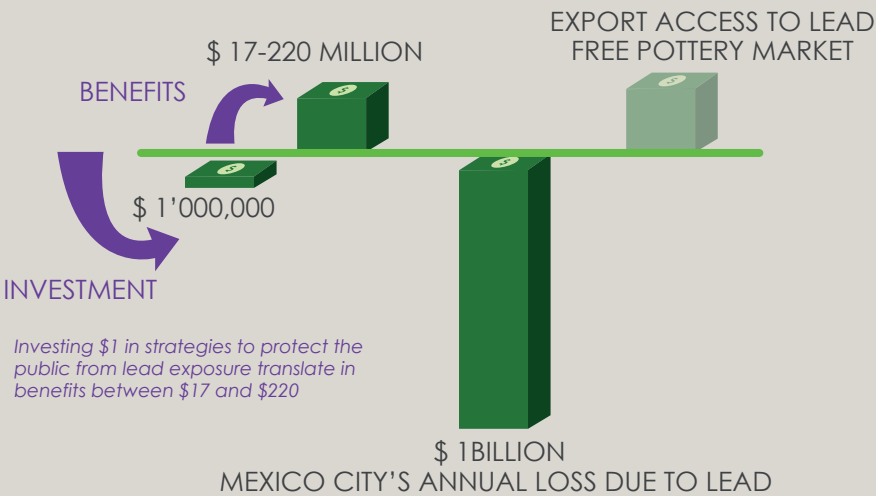


1. Inhalation, ingestion and/or dermal exposure / 2. Lead absorption at the gastrointestinal tract / 3. Fixation of lead in bones / 4. Bone resorption: mineral release (lead included) from bone tissue into bloodstream / 5. Lead passes through the placenta / 6. Lead reaches the fetus

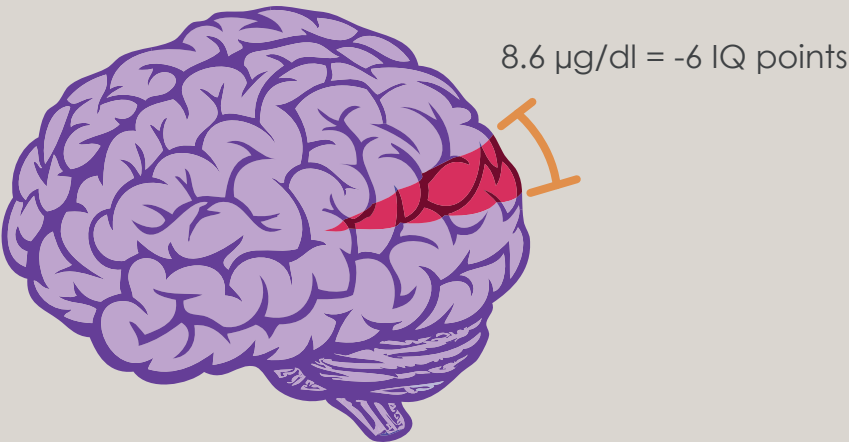
LEAD EXPOSURE EFFECTS



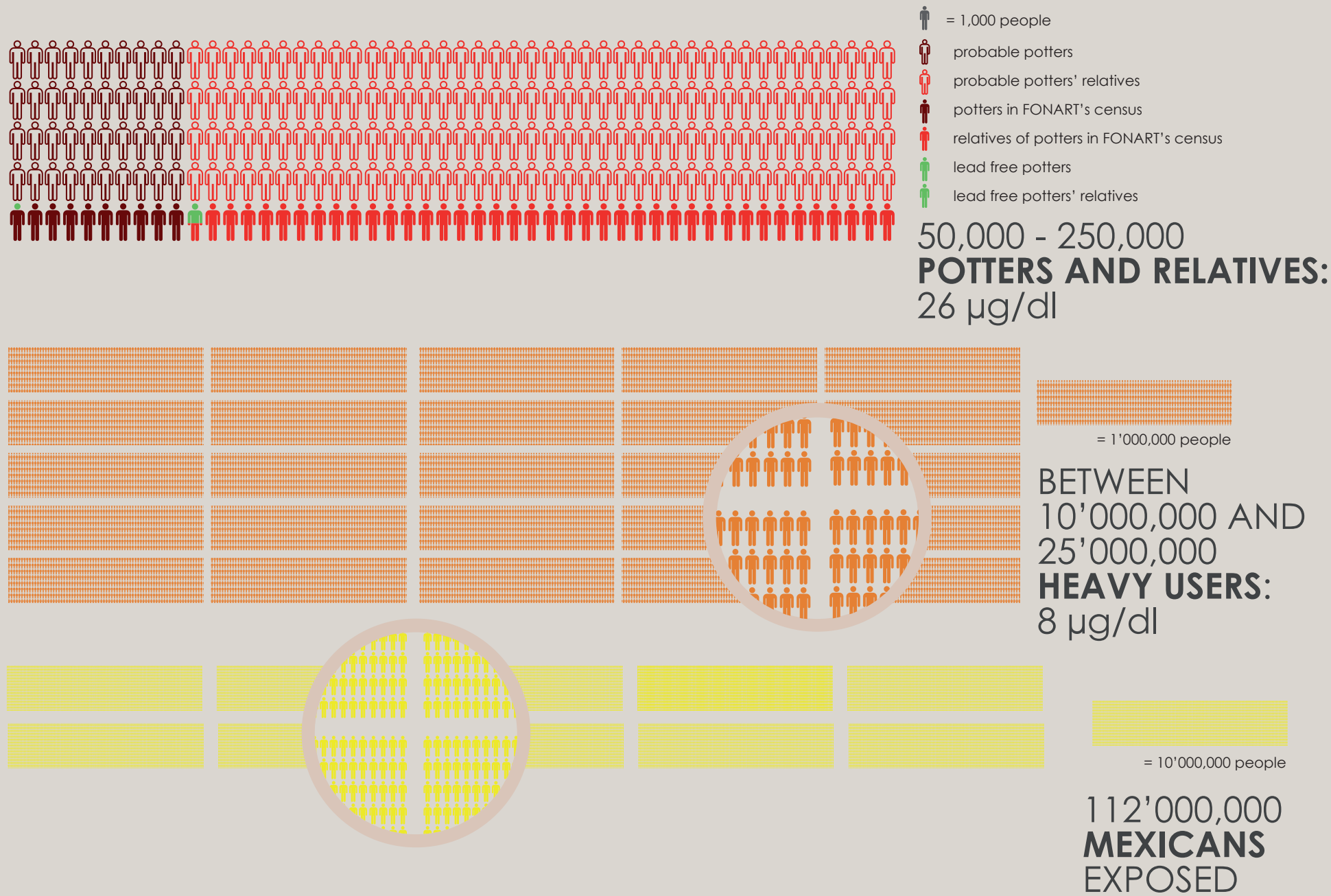
LEAD & ECONOMY



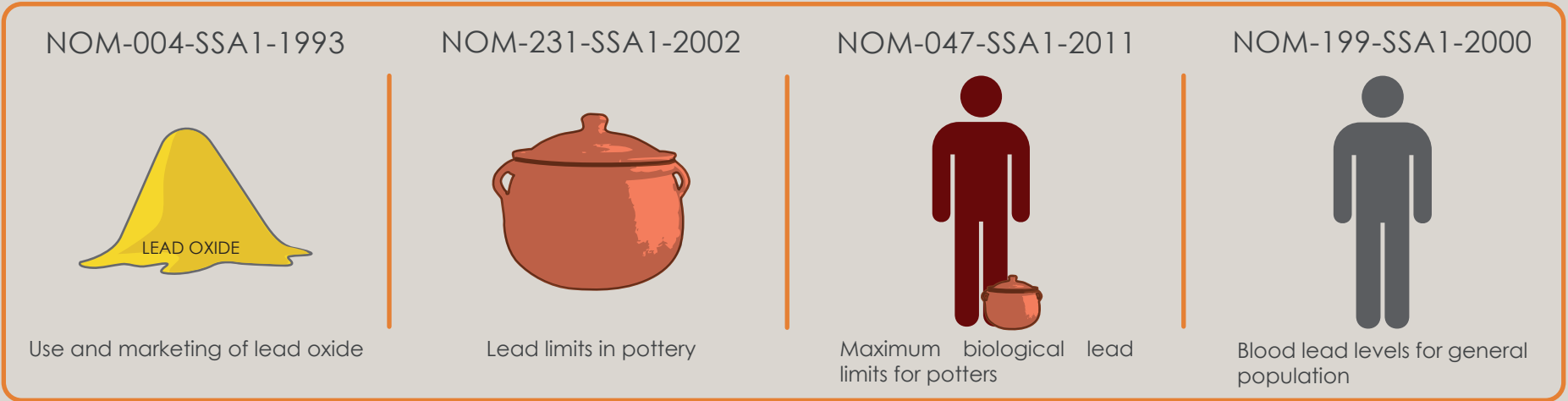
LEAD & IQ



AFFECTED POPULATION



LEGAL FRAMEWORK



STRATEGY ACTIONS

